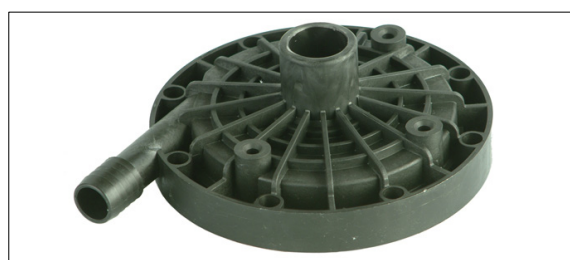


DARI-KOOL INFORMATION

AGITATOR MOTORS & PUMPS



All models and spares available.
Give us a call!



fabdec gmbh · Gerhardstrasse 5 · 45892 Gelsenkirchen · Germany
Tel.: +49 (0)209 700 90-0 · Fax: +49 (0)209 700 90-20 · E-Mail: germany@fabdec.com · www.fabdec.com

flyer_EN_CoolingSpares_AgitatorsPumps_cover_101122

DARI-KOOL INFORMATION

AGITATOR MOTORS

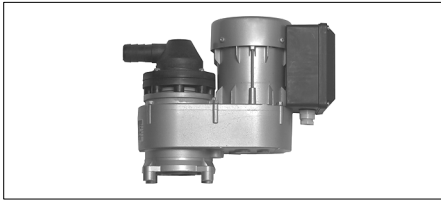
suitable for DeLaval:



0710-101-1135 Agitator motor R1C 225 F45BC 230V
1ph 50Hz 21rpm shaft Ø 15mm



0710-101-1050 Agitator motor R1C 225 D1BC 230V
1ph 50Hz 32rpm shaft Ø 15mm



710297 Agitator motor R1C 245 NP5B 230V
1ph 50Hz 23rpm

710312 Agitator motor R3 245 NP5B 400V
3ph 50Hz 23rpm



710334 Agitator motor R1C 245 L5B 230V
1ph 50Hz 32rpm shaft Ø 15mm

suitable for Packo:



710308 Agitator motor R1C 245 N7B 230V 1ph
50Hz 30rpm shaft M28 thread

0710-101-1100 Agitator motor R3245 N7B 380V 3ph
50Hz 21rpm shaft M28 thread



0710-101-3050 Agitator motor R1C 245 L5B 230V 1ph
50Hz 21rpm shaft Ø 15mm

DARI-KOOL INFORMATION

AGITATOR MOTORS

suitable for Japy:



0710-101-1040 Agitator motor R1C 225 D2BC 230V
1ph 50Hz 25rpm shaft Ø16mm



710328 Agitator motor R1C 225 F2BC 230V
1ph 50Hz 21rpm shaft Ø15mm



0710-101-1085 Agitator motor R1C 225 F4BC 230V
1ph 50Hz 48rpm shaft Ø14mm

suitable for Etscheid:



0710-101-3040 Agitator motor R1C 225 F6BC 230V
1ph 50Hz 30rpm shaft M14 thread



710298 Agitator motor R1C 225 M6BC 230V
1ph 50Hz 21rpm shaft M14 thread

suitable for Wedholm:



710324 Agitator motor R1C 225 H2BC 230V
1ph 50Hz 21rpm shaft Ø 14 mm

710325 Agitator motor R1C 225 H2BC 230V
1ph 50Hz 30rpm shaft Ø 14 mm

DARI-KOOL INFORMATION

AGITATOR MOTORS

suitable for Röka:



710336

Agitator motor R1C 225 F2BC, 230V
1ph 50Hz 40rpm, M14 thread



0710-101-3075

Agitator motor R1C 225 H2BC 230V
1ph 50Hz 39rpm M14 thread



0710-101-4000

Agitator motor R1C 245 NSBR 230V
1ph 50Hz 25rpm M28 thread

suitable for Mueller:



0710-101-2740

Agitator motor R1C 245 NSBR 230V
1ph, 50Hz, 25rpm shaft Ø 19 mm



710295

Agitator motor R1C 245 NOB 230V 1ph
50Hz 25rpm



0710-101-4005

Agitator motor Sirem R1C 245 MB2B
1ph 50Hz 30rpm shaft Ø19mm
separate flange required

DARI-KOOL INFORMATION

AGITATOR MOTORS

Spares for 'F' type motor:



5000-001-0004

Cogwheel No. 1 for agitator motor
Sirem R1C 225 F2BC 21/30/40 rpm



5000-001-0002

Cogwheel No. 2 for agitator motor
Sirem R1C 225 F2BC 30 rpm

5000-001-0007

Cogwheel No. 2 for agitator motor
Sirem R1C 225 F2BC 40 rpm

5000-001-3805

Cogwheel No. 2 for agitator motor
Sirem R1C 225 F2BC 21 rpm



5000-001-3815

Cover for bottom bearing F-Type
14-16mm



5000-401-5150

Fan blade for Sirem agitator



5000-001-2740

Capacitor 2µf for agitator motor Sirem
D2BC & F2BC

AGITATOR MOTORS

Spares for 'D' type motor:



5000-001-1010

Cogwheel No. 1 for agitator motor
Sirem R1C 225 D2BC 25 & 30rpm

5000-001-3735

Cogwheel No. 1 for agitator motor
Sirem R1C 225 D2BC 21rpm



5000-001-3755

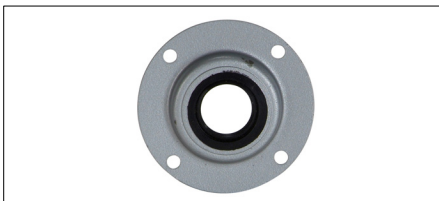
Cogwheel No. 2 for agitator motor
Sirem R1C 225 D2BC 25rpm

5000-001-1020

Cogwheel No. 2 for agitator motor
Sirem R1C 225 D2BC 21 & 30rpm

5000-001-3745

Cogwheel No. 2 for agitator motor
Sirem R1C 225 D2BC 48rpm



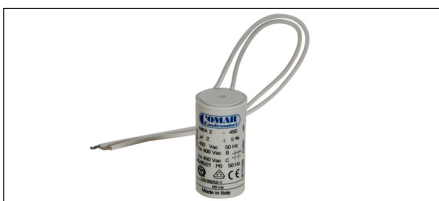
5000-001-0135

Cover for 'D' type bottom bearing
14-16mm



5000-401-5150

Fan blade for Sirem agitator

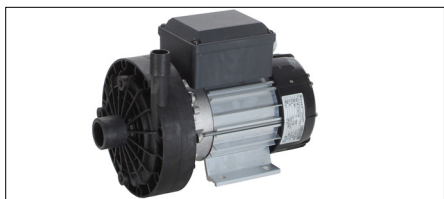


5000-001-2740

Capacitor 2µf for agitator motor Sirem
D2BC & F2BC

CIRCULATION PUMPS

suitable for DeLaval:



0720-101-2850

Circulation pump PB 1C 285 H4B, 230V
1ph 50Hz, inlet 40mm, outlet 25mm

0720-101-2950

Circulation pump PB 3 285 H4B, 400V
3ph 50Hz, inlet 40mm, outlet 25mm

suitable for Packo:



0720-101-0030

Circulation pump PB 1C 270 K1B, 230V
1ph 50Hz inlet 50 outlet 37mm

0720-101-0010

Circulation pump PB 3 270 K1B, 400V
3ph 50Hz inlet 50, outlet 37mm

suitable for Japy:



0720-101-2930

Circulation pump PB 1C 80 K(2)B 230V
1ph 50Hz inlet 50mm, outlet 37mm
Circulation pump PB 1C 80 K(2)B 400V
3ph 50Hz inlet 50mm, outlet 37mm

CIRCULATION PUMPS

Spares for pumps:



710243

Impeller for circulation pump PB 1C 250/270 H1B for 16mm shaft

5000-401-2030

Impeller for circulation pump PB 1C 250 H1B for 12mm shaft



710335

Impeller Ø 107mm for 'K' type circulation pump with 16mm shaft



410307

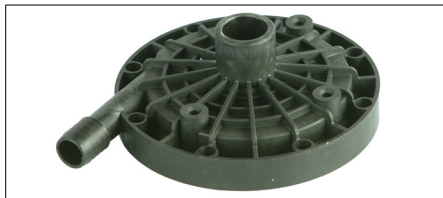
Gasket set D16 for circulation pump PB 1C 250/270 H1B, PB1C 80 K1B

5000-001-0470

Gasket set D12 for circulation pump PB 1C 250, until 06/1990

5000-001-0490

Gasket set D10 for circulation pump PB 1C 250, old version



710310

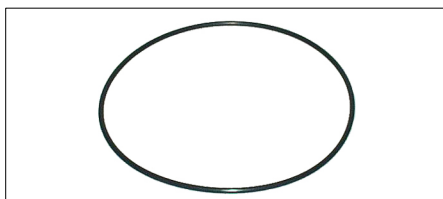
Suction and pressure cover for pumps PB 1C 270 H1B, PB1C 250 H1B

5000-401-2050

Suction and pressure cover for 'K' type pumps (for ice builder only)

0110-201-9000

Set of screws for pump housing, with drill & hexagon socket wrench



410505

O-ring seal 142,47x3,53mm for pump PB 1C 250/270 H1B

5000-701-3770

O-ring seal 136 x 7mm for 'K' type pumps



710273

Capacitor 10µF for pump PB1C250H1B (after 1995)

710274

Capacitor 14µF for pump PB1C270H1B

720392

Capacitor 16µF for pump PB1C250H1B (before 1995)

710276

Capacitor 20µF for pump PB1C80K1B

